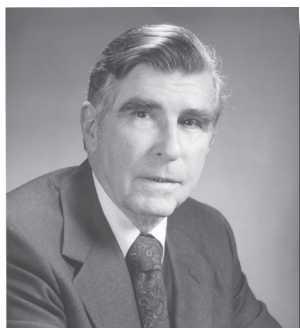


# DR. WILLIAM W. HAY AWARD FOR EXCELLENCE



# 2012 CALL FOR ENTRIES

The selection process for the fourteenth Dr. William W. Hay Award for Excellence has begun and this year's chair, Michael W. Franke, a former student of Dr. Hay, has issued a call for entries. The 2011 Hay Award went to CSX Intermodal Terminals, Inc. for their Northwest Ohio Intermodal Terminal.



*CSX Intermodal Terminals, Inc. accepting the 2011 Hay Award at the AREMA 2011 Annual Conference in Minneapolis, MN.*

The Dr. W. W. Hay Award for Excellence was established by the Directors of AREMA to recognize outstanding achievement in Railway Engineering and to honor the memory and accomplishments of one of their members and leaders: William Walter Hay.

Dr. Hay was a professional railroader in both the military transportation service and the private railway industry. He was a consultant on design, construction and operations of railroads and, for over 25 years, he was Professor of Railway Civil Engineering at the University of Illinois, Urbana. He was also a teacher, motivator and mentor for dozens of men and women who chose to enter the transportation industry.

The purpose of the award is to honor innovative railway engineering procedures, projects and products and the individual(s) who have created and successfully applied them to the railroad industry. Criteria for winning the award are:

### INNOVATION

The development and/or application of new concepts, products or practices including state-of-the-art physical and information-oriented technology.

### SAFETY

The enhancement of safety in either the application itself or as a process of procedure which contributes to the overall safety of railroad personnel or railway operations.

### SERVICE PERFORMANCE AND RELIABILITY

An undertaking which contributes to more efficient, effective and reliable railway performance, especially as viewed by the railroad's customers.

Consideration is also given to the project's objective, stated goals, costs and benefit achievement and the general advancement of the base of railway engineering knowledge.

***Entries should be received no later than June 1, 2012***

Please send six (6) copies of your entry. Each entry should include a brief description of the project, specifically focused on how it deals with and achieves the Hay Award Criteria. Any additional information which will aid in understanding the scope, impact and success of the entry will be appreciated.

**SEND 2012 CALL FOR ENTRIES TO:**

Stacy Spaulding  
10003 Derekwood Lane, Suite 210, Lanham, MD 20706  
Phone: +1.301.459.3200 Fax: +1.301.459.8077  
Email: [sspaulding@arema.org](mailto:sspaulding@arema.org)

**AREMA**<sup>®</sup>  
American Railway Engineering and  
Maintenance-of-Way Association