

THE AMERICAN RAILWAY ENGINEERING AND MAINTENANCE  
OF WAY ASSOCIATION

**Committee:** 4 (Rail), **Subcommittee:** 6 (Joint Bars, Insulated Joints, Track Bolts, Spring Washers)

**Letter Ballot Number:** 04-21-03

**Assignment:** None

**Explanation of Ballot:**

This ballot was a result of general review of Section 3.3. It was concluded that in Section 3.3 Table 4-3-1, all references to 140RE should be removed as it is no longer a contemporary rail section. In this table, Note 2 will be added to clarify the calculation of proper hole spacings for insulated joint bars. Updated and corrected figures for Recommended Rail drillings for 115RE, 119RE, 132RE, 136RE, 141RE and 133RE will be added.

**Reason:** Updating of Manual Section to reflect current practices and to add clarity.

Draft Not Yet Approved



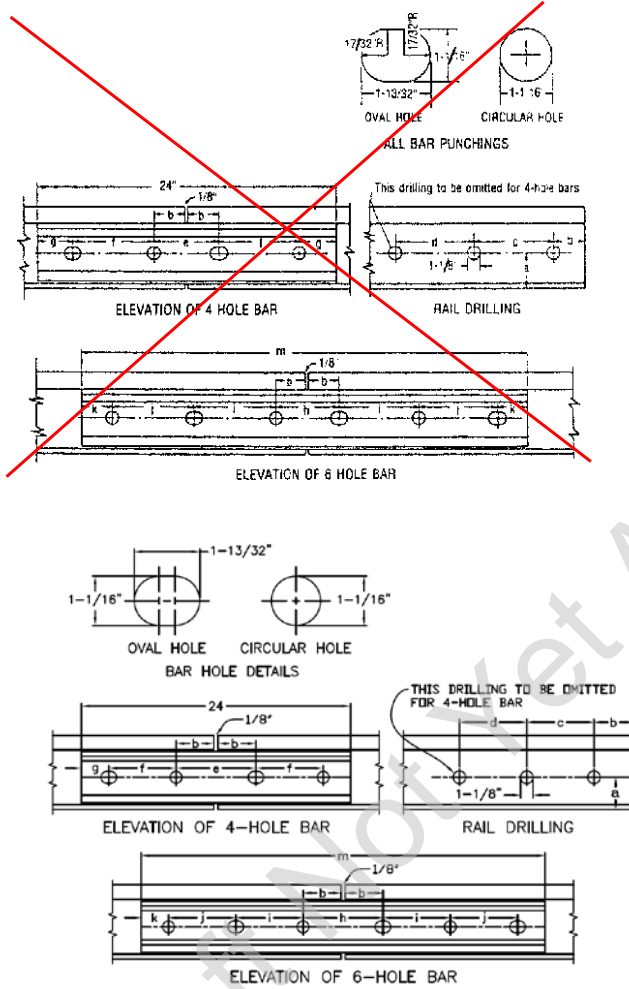


Figure 4-3-8. Recommended Rail Drillings and Bar Punchings for 115 RE, 119 RE, and 133 RE Utilizing 1 Inch Track Bolts

Formatted: Highlight

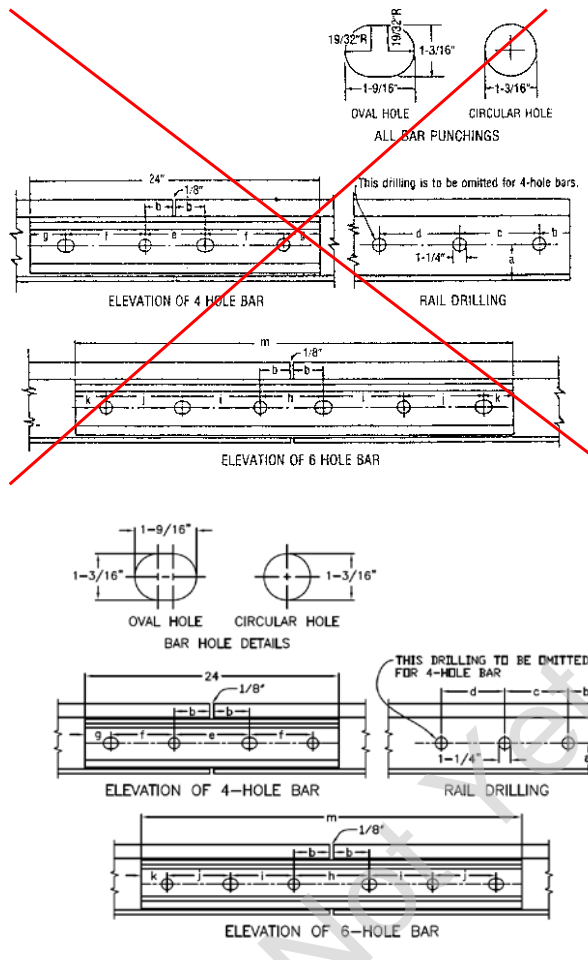


Figure 4-3-9. Recommended Rail Drillings and Bar Punchings for 132 RE, 136 RE, 140 RE Rails, and 141 RE Rails and Joint Bars, Utilizing 1-1/8 Inch Track Bolts

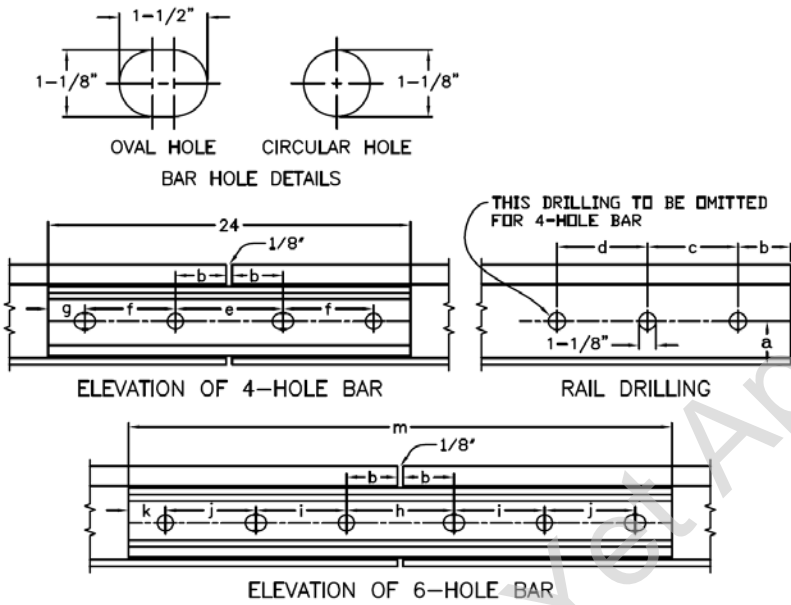


Figure 4-3-XX Recommended Rail Drilling and Bar Punching for 133RE, Utilizing 1-1/16" inch Track Bolts

Formatted: Highlight

Formatted: Highlight

Formatted: Font: (Default) Arial, 10 pt, Bold, Font color: Black

Formatted: Space Before: 2.1 pt, After: 8 pt, Line spacing: Exactly 11.4 pt, Font Alignment: Baseline, Tab stops: 7", Right

Draft Not Yet Approved